

**PARTS LIST FOR SDR10P SERIES DRILLS
NON-REVERSING SINGLE REDUCTION
SERIAL "C"**

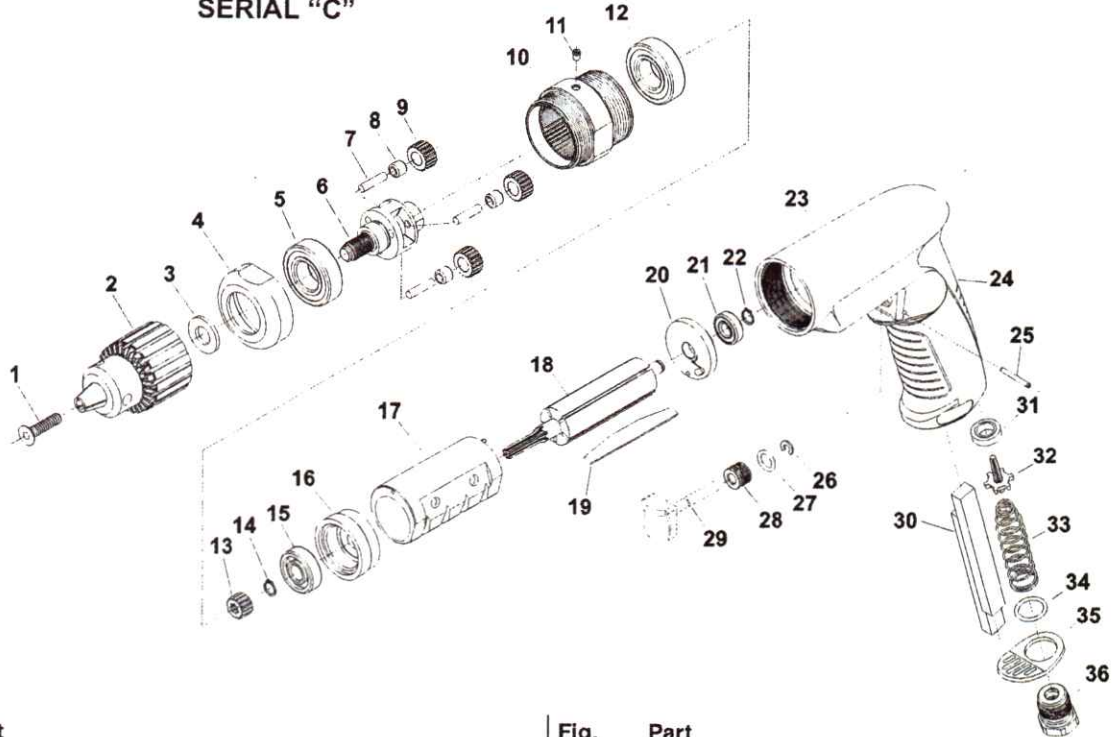


Fig. No.	Part No.	Description
1.	57250R	Chuck Screw (for model numbers ending with 4)
2.	21019B	1/4" Chuck (for model numbers ending with 2)
	21133B	3/8" Chuck (for model numbers ending with 3)
	74222	1/2" Chuck (for model numbers ending with 4)
3.	ME5A72	Spacer (for model numbers ending with 2 or 3)
	35798	Spacer (for model numbers ending with 4)
4.	SDR-43	Gear Case Cap
5.	10265	Ball Bearing
6.	SDR-60	Gear Carrier (2600 RPM)(3/8" thread)
	SDR-62	Gear Carrier (4000 RPM)(3/8" thread)
	SDR-63	Gear Carrier (6000 RPM)(3/8" thread)
	SDR-64	Gear Carrier (2600 RPM)(1/2" thread)
7.	SDR-24	Pin (3)*(2600 & 4000 RPM)
	30062	Pin (3)*(6000 RPM)
8.	10028B	Needle Bearing (3)*(2600 & 4000 RPM)
	10040	Needle Bearing (3)*(6000 RPM)
9.	SDR-44	Planetary Gear (3)* (2600 RPM)
	SDR-45	Planetary Gear (3)* (4000 RPM)
	SDR-46	Planetary Gear (3)* (6000 RPM)
10.	SDR-40	Single Reduction Gear Case (Includes Fig. 11)
11.	30375	Grease Fitting
12.	ME11A33A	Ball Bearing
13.	SDR-47	Sun Gear (6000RPM only)
14.	21491	Retaining Ring (6000RPM only)
15.	10220	Ball Bearing
16.	SDR-80	Front End Plate
17.	74030	Cylinder, Non-Reversing
18.	SDR-7	Rotor (7 tooth)(2600 & 6000 RPM)
	SDR-8	Rotor (10 tooth)(4000 RPM)
19.	SP74048	Vane Set
20.	74023	Rear End Plate
21.	10253	Ball Bearing
22.	21491	Retaining Ring
23.	SDR-1	Pistol Non-Reversing Housing
24.	SPSDR-28	Grip (Includes Grip Tape)

Fig. No.	Part No.	Description
25.	30610	Roll Pin 5/64 x 3/4 in
26.	21542	Retaining Ring
27.	14311	O-Ring
28.	SDR-23	Trigger Sleeve
29.	SDR-200	Trigger
30.	04046	Silencer Pad (2)*
31.	IM3100-22	Tipper Valve Seat
32.	SDR-20	Tipper
33.	SDR-13	Trigger Spring
34.	69007	O-Ring
35.	SDR-35	Exhaust Cap
36.	66244R	Inlet Adapter

Not Shown:

SPSDR-7A	7 Tooth Rotor Motor Assembly (2600 & 6000 RPM) (Includes Figures 15-22)
SPSDR-8A	10 Tooth Rotor Motor Assembly (4000 RPM) (Includes Figures 15-22)
SPSDR-1A	1HP Non-Reversing Housing Assembly (Includes Figures 23-36)
SPSDR-60A	Gear Carrier Assembly (2600 RPM)(3/8" thread) (Includes Figures 5-9)
SPSDR-62A	Gear Carrier Assembly (4000 RPM)(3/8" thread) (Includes Figures 5-9)
SPSDR-63A	Gear Carrier Assembly (6000 RPM)(3/8" thread) (Includes Figures 5-9)
SPSDR-64A	Gear Carrier Assembly (2600 RPM)(1/2" thread) (Includes Figures 5-9)
	30000 Chuck Key 1/4"
	30002 Chuck Key 3/8"
	30429 Chuck Key 1/2"

*Order Quantity As Required
FURNISH CATALOG, SERIAL, AND MODEL NUMBER
WHEN ORDERING PARTS