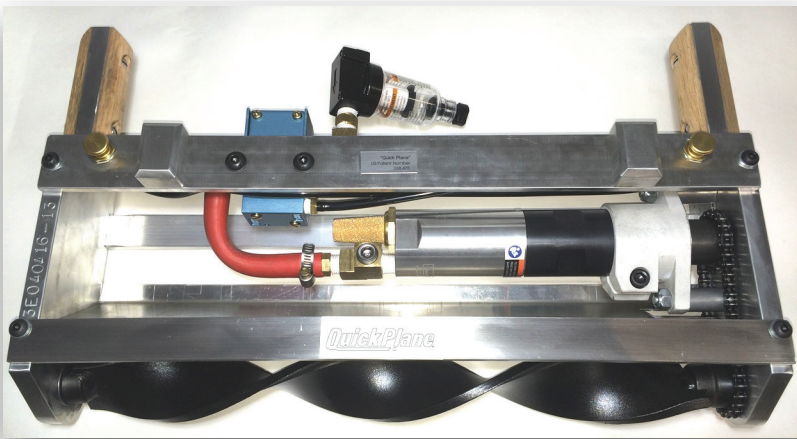


QuickPlane

PATENT DES.

OPERATING MANUAL for Quick Plane Models 2112, 2116, 2124



Effective January 1,2016

CONGRATULATIONS!!

CONGRATULATIONS ON THE PURCHASE OF YOUR NEW QUICKPLANE®. THIS AIR TOOL IS SPECIFICALLY DESIGNED FOR THE SHAVING, OR PLANING OF OPEN AND CLOSED CELL FOAMS.

THIS MANUAL WILL PROVIDE YOU WITH REQUIREMENTS AND SUGGESTIONS FOR THE PROPER OPERATION OF YOUR QUICKPLANE®. IMPROPER USE OR MAINTENANCE OF THE QUICKPLANE® SHALL RESULT IN VOIDING ANY WARRANTY ON THE QUICK PLANE.

SHOULD YOU HAVE ANY QUESTIONS OR PROBLEMS NOT COVERED IN THIS MANUAL, PLEASE CONTACT US AT THE INFORMATION LISTED BELOW. YOU MAY ALSO FIND SOME USEFUL INFORMATION ON OUR WEB SITE.

CONGRATULATIONS AND THANK YOU FOR CHOOSING QUICKPLANE®.



6767 8th Street, Buena Park, CA 90620

Ph: 714.521.9180 Fax: 714.521.9184 Toll Free: 877.744.9180 Email: sales@threedaytool.com

Table of Contents

TABLE OF CONTENTS.....	2
BEFORE YOU BEGIN.....	3
AIR SUPPLY AND LUBRICATION.....	4
AIR DRIVE MOTOR.....	7
AIR FILTER.....	7
ROUTINE MAINTENANCE REQUIREMENTS.....	7
SCHEMATIC OF QUICKPLANE®.....	5-6
BLADES—REPLACEMENT OF.....	9
REPLACEMENT PARTS LIST.....	9-10
LIMITED WARRANTY	Back Cover

Be sure to read this entire manual prior to operating the QuickPlane®. The information provided here will help prevent harm to the operator, others and the equipment. If you have any problems please contact Three Day Tool Service, Inc. at sales@threedaytool.com

Before You Begin.....

Safety Warnings and Precautions

Warning: When using this tool, basic safety precautions should always be followed to reduce the risk of injury to self or others and damage to equipment. The warnings, cautions, and instructions discussed in this manual cannot cover all possible conditions and situations that may occur. It is understood by the operator that common sense and caution are factors which cannot be built into this product, therefore shall be instilled by the operator.

Read all instructions before using this product!

1. **Avoid working alone.** If an accident happens, an assistant can bring help.
2. **Avoid electrical shock.** Stay clear of all exposed and overhead wiring.
3. **Keep work area clean and well lighted .** Cluttered areas invite accidents.
4. **Keep children away.** Children must never be allowed in work areas.
5. **Store idle equipment.** When not in use, QuickPlane® must be stored in a dry and clean space to inhibit rust and debris from entering the air motor.
6. **Dress properly.** Do not wear loose clothing or jewelry as these items may be caught in moving parts. Protective clothes and nonskid footwear are required when working with this tool. Wear restrictive hair covering to contain long hair.
7. **Use eye and ear protection.** Always wear ANSI approved impact safety goggles and dust mask or respirator. Ear protection is also required.
8. **Do not over reach.** Keep proper footing and balance at all times. Do not reach over or across electrical cables or vacuum hoses.
9. **Maintain tools with care.** Before connecting air line, be sure to check all hose connections. If there are any loose connections, reconnect it and be sure it is seated properly.
10. **Use the right tool for the job.** Do not use this tool for any purpose other than what it was intended for.
11. **Stay alert.** Watch what you are doing; use common sense. Do not operate tool when you are tired or under the influence of drugs or alcohol.
12. **Check for damaged parts.** Check for alignment and binding of moving parts or any other conditions that may affect proper operation. Any parts that are damaged should be properly repaired or replaced by a qualified technician.

Air Supply & Lubrication

Air Supply

The QuickPlane® requires 23.0 cfm at 90-105 psi of pressure. It is not recommended to run at pressures over 105 psi. For continual on site operation, we suggest using a 30 cfm air compressor.

When connected properly, the QuickPlane® will operate at approximately 2400 R.P.M. for all Models. Increasing the air pressure over and above the requirements could damage the air motor.

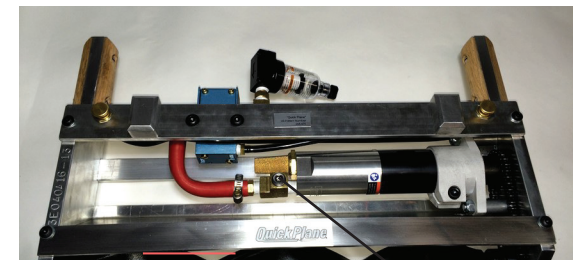
Your air supply hose should be 1/2" I.D. with couplings 3/8" I.D. Be sure any and all couplings are rated the same as or higher than the air pressure being utilized. Air must be clean and dry. Use air dryer system if necessary.

VERY IMPORATANT!!!

Lubrication

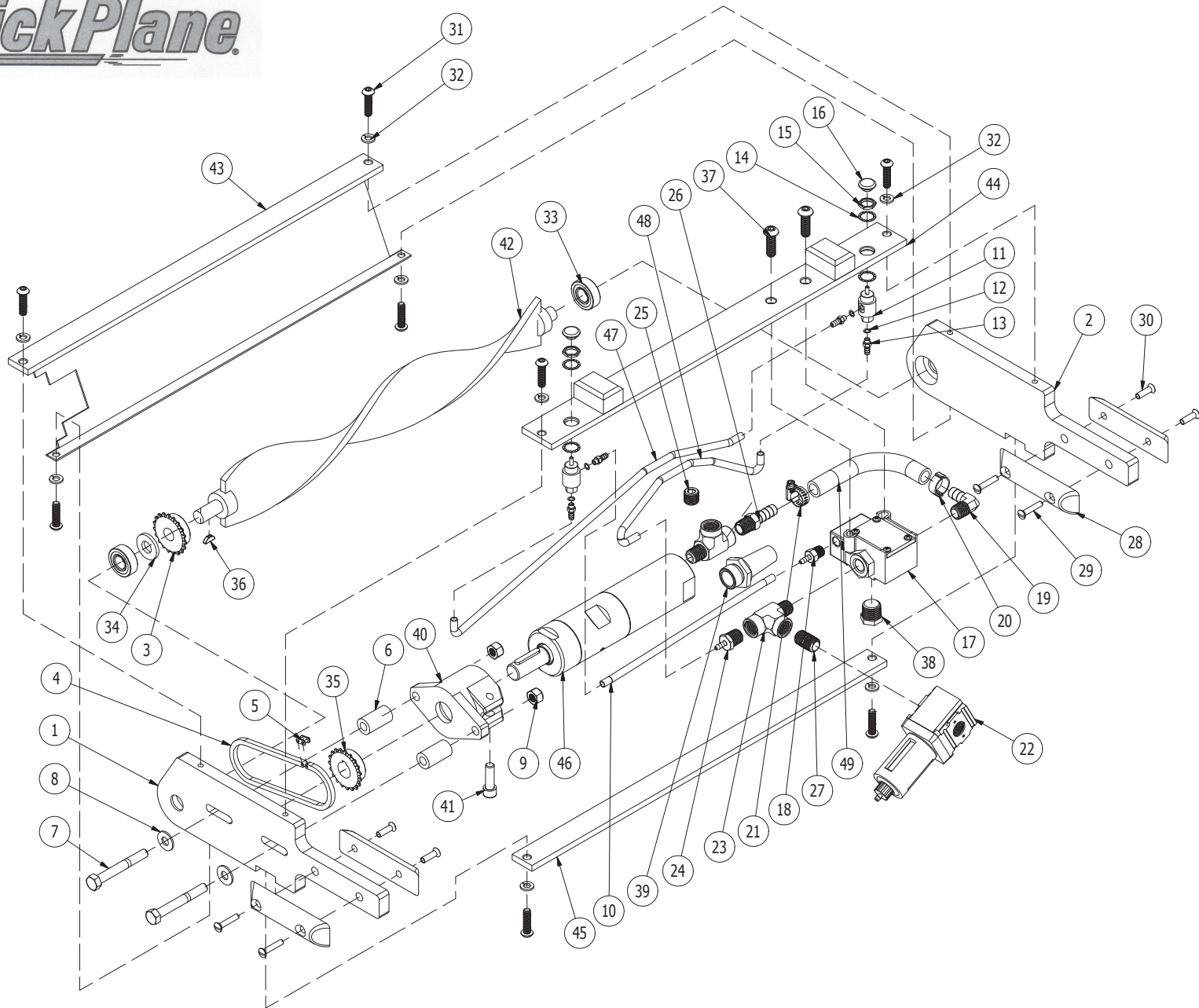
Lubrication is required at least every 6-8 hours of operation. During continuous heavy use, lubrication is required every 4 hours. Use a suitable pneumatic air motor oil such as: **Desoutor Air Motor Oil** (available through your *Quick Plane® Distributor*), BP Energol E46, Esso Arox EP46, Q8 Chopin 46, Mobil Almo Oil 525, Shell Torvcula 32, or Texaco Aries 32. The manufacture DOES NOT recommend the use of Marvel Mystery Oil. Numerous problems have been expressed with this oil. **NOTE: A QUALITY AIR SYSTEM DRYER, IS NOT A SUBSTITUTE FOR PROPER LUBRICATION. FAILURE TO OIL THE AIR DRIVE MOTOR PROPERLY, SHALL VOID WARRANTY!**

OILING INSTRUCTIONS: Remove oiler plug at the motor. While holding the QuickPlane® in a diagonal position, allow 8-10 drops of air motor oil to drain into the air motor for 1-2 minutes. Re-install the oiler plug and tighten securely. Re-connect air supply and run for 10-15 seconds. For extended periods of idle use, follow this procedure once a week and store in a dry and clean space to inhibit rust and debris from entering the air drive motor.



Oiler plug

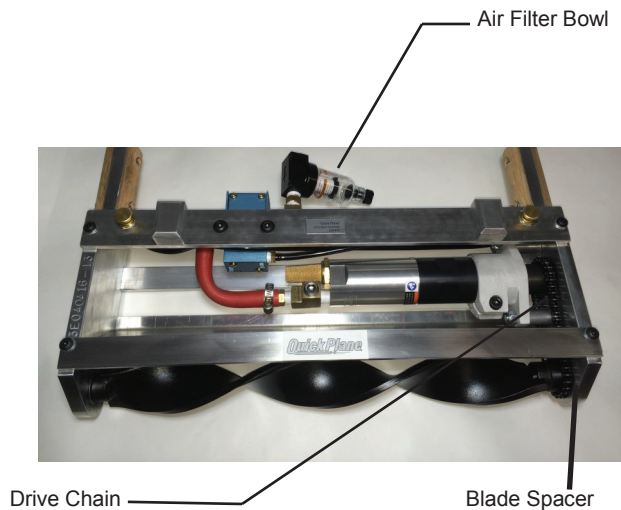
QuickPlane



ROUTINE MAINTENANCE

ROUTINE MAINTENANCE: In order to keep your QuickPlane® operating at peak performance, please perform the following at the recommended intervals:

1. Visually inspect air filter/particle separator bowl on each use of the tool, to insure contaminants are not present which could damage and shorten tool life.
2. Clean the particle separator filter element and bowl as needed. Replace filter element once every 6 months. To remove air filter bowl, turn it counter-clockwise and pull straight down. Before replacing the air filter bowl, be sure the O-ring is properly seated on the top rim of the bowl.
3. Clean air motor inlet screen, minimally, once every 3 months by removing air hose and connecting block from motor and unscrewing 3/4" nut on motor to gain access to the screen.
4. Check chain and master link for signs of wear once every 100 hours of operation. Insure chain does not rub against side plate or motor spacers.
5. Check washer spacer on blade ends once every 100 hours of operation to insure minimal lateral blade movement and proper chain to gear alignment. Install new spacers as necessary.



Blade Replacement

CAUTION: Disconnect the air line before attempting any service work.

Follow these instructions for easy QuickPlane® Blade Replacement. It is also recommended that all parts involved in the Blade Assembly (i.e. drive chain, sprockets, spacers, bearings, etc.) be checked for excessive wear and replaced at the time of blade replacement.

1. Position the QuickPlane® in a vertical position, left side plate down, by clamping left side plate (1) handle in a vise or to a bench.
2. Loosen air motor bolts (7) so that air motor (46) moves freely. Release as much tension on the drive chain (4) as possible.
3. Remove the right hand side plate (2) as follows:
Remove all four allen screws (37) from right hand side plate (2)
Place a block of wood on the inside of the right hand side plate, next to blade, to lightly tap on until plate and bearing (33) release the blade hub.
3. Proceed to the outside of the Left Side Plate (1):
using a 3/8" punch, tap out blade hub far enough from bearing to remove drive chain (4) from blade sprocket (3), then tap out blade completely.
4. It is recommended that the blade sprocket (3) and woodruff key (36) be replaced when installing a new blade. When installing a sprocket on the blade it is important that the keyway is lined up with the woodruff key on the long blade hub to avoid any slippage during operation. Install the blade sprocket and woodruff on your new blade and it is ready to be reassembled.
5. With the QuickPlane® still in the vertical position, left side plate down, replace the spacer (34) and lower blade into bearing, making sure that the drive chain is on the blade sprocket teeth at this time. Lightly tap the blade squarely into the bearing using a wood block so not to damage the short hub (Caution must be taken to make sure the blade hubs fit squarely into the bearings or damage may occur). Replace any spacers on the opposite end of blade and line up right side plate and bearing squarely, using a block-tap the right side plate and bearing on hub only far enough to reattach the straps and allen screws. Reposition straps and tighten allen screws
6. Reposition the air motor (46) so that the drive chain is almost tight. Tighten the air motor bolt (7) nearest the blade first, making sure the flat side of the air motor spacer (6) is faced toward the motor sprocket (35) to allow proper clearance during operation, tighten the rear air motor bolt with flat side of motor spacer (6) toward sprocket. (On 2E Models, caution must be taken to make sure the flats on motor spacers are properly positioned or damage may occur).
7. You are now ready to reconnect the air supply. When complete the blade and motor should turn freely. If your QuickPlane® seems to bind or lacks power, check the tension on the drive chain (4) to insure it is not too tight and the motor spacers (6) are properly positioned. If problems persist, contact Three Day Tool Service, Inc. at sales@threedaytool.com

Replacement Parts List

Part #	Description	Schematic #
2100-00	Pneumatic Oil-8 oz. Bottle	-
2100-01	Left Hand Side Plate	1
2100-02	Right Hand Side Plate	2
2100-03	Air Drive Motor Sprocket	35
2100-04	Drive Chain	4
2100-05	Drive Chain Master Link	5
2100-06	Air Motor Spacer	6
2100-07	Air Motor Bolt	7
2100-08	Air Motor Bolt Washer	8
2100-09	Air Motor Bolt Nut	9
2100-10	Air Supply Tubing	48
2100-11	Push Button Air Valve	11
2100-12	Rubber Washer	12
2100-13	Push Button Tube Connector	13
2100-14	Air Valve Lock Washer	14
2100-15	Push Button Air Valve Nut	15
2100-16	Push Button	16
2100-17	Activating Valve	17
2100-18	Activating Valve Pilot Connector	18
2100-19	Elbow Hose Barb	19
2100-20	Hose Clamp	20
2100-21	Screw Clamp	21
2100-29	Complete Air Filter Assembly	22
2100-30	Connecting Block	23
2100-31	Block Tubing Connector	24
2100-32	Oiler Plug	25
2100-33	Straight Hose Barb	26
2100-34	Air Filter Connector	27
2100-35	Handle Half (Inner or Outer)	28
2100-36	Male Fastening Screw	29
2100-37	Female Fastening Screw	30
2100-38	Allen Screw	31
2100-39	Lock Washer	32
2100-40	Blade Bearing	33
2100-41B	Blade Spacer	34
2100-42	Blade Sprocket	3
2100-43	Blade Sprocket Woodruth Key	36
2100-44	Activating Valve Attach. Screw	37
2100-45	Activating Valve Muffler	38

Replacement Parts List

Part #	Description	Schematic #
2112-00	12" Special Purpose Blade	42
2112-01	12" Standard Blade	42
2112-02	Forward Guard Strap Assembly	43
2112-03	Rear top Strap Assembly	44
2112-04	Lower Strap Assembly	45
2112-05	12" Air Drive Motor	46
2112-06	Button to Button Air Supply Tubing	47
2112-07	Button to Pilot Air Supply Tubing	10
2112-09	Valve to Motor Air Supply Tubing	49
2112-SPC	12" QuickPlane w/ Special Blade	-
2112-STD	12" QuickPlane w/ Standard Blade	-
2116-00	16" Special Purpose Blade	42
2116-01	16" Standard Blade	42
2116-02	Forward Guard Strap Assembly	43
2116-03	Rear Top Strap Assembly	44
2116-04	Lower Strap Assembly	45
2116-05	16" Air Drive Motor	46
2116-06	Button to Button Air Supply Tubing	47
2116-07	Button to Pilot Air Supply Tubing	10
2116-09	Valve to Motor Air Supply Tubing	49
2116-SPC	16" QuickPlane w/ Special Blade	-
2116-STD	16" QuickPlane w/ Standard Blade	-
2124-00	24" Special Purpose Blade	42
2124-01	24" Standard Blade	42
2124-02	Forward Guard Strap Assembly	43
2124-03	Rear Top Strap Assembly	44
2124-04	Lower Strap Assembly	45
2124-05	24" Air Drive Motor	46
2124-06	Button to Button Air Supply Tubing	47
2124-07	Button to Pilot Air Supply Tubing	10
2124-09	Valve to Motor Air Supply Tubing	49
2124-SPC	24" QuickPlane w/ Special Blade	-
2124-STD	24" QuickPlanew/ Standard Blade	-

NOTE: All parts listed on this page are QuickPlane® Model specific. All parts listed on page 9 are universal between all 3 models

When ordering parts be sure to give your model and serial number. Serial Number can be found stamped on top of the right hand side plate.