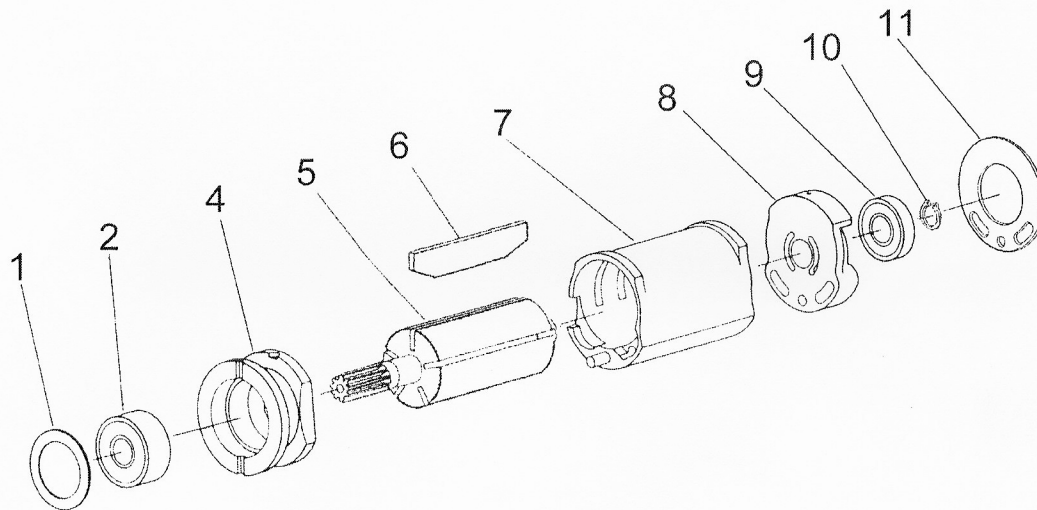


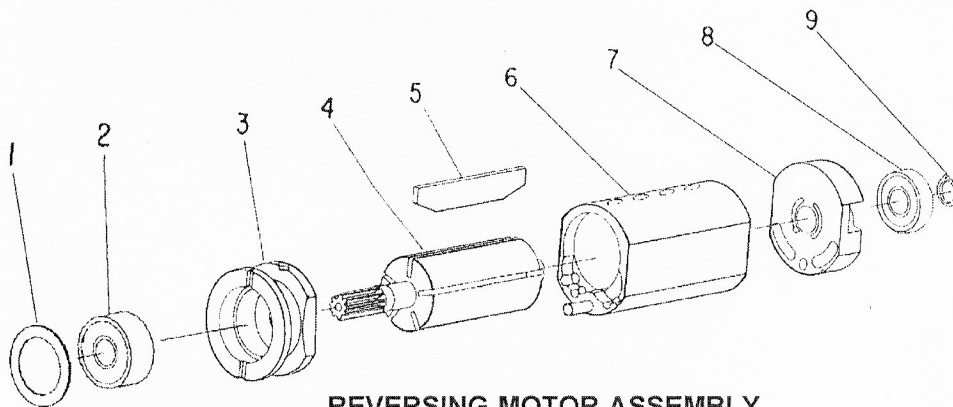
PARTS LIST FOR NO. 3 SERIES PISTOL AND "T" HANDLE DRILLS



NON-REVERSING MOTOR ASSEMBLY

Fig. No.	Part No.	Description
1.	35227	Washer
2.	10221	Bearing—Ball
4.	13226	Plate—Front End (Includes Fig. 2)
5.	44870	Rotor (2150 RPM)
	54675	Rotor (360, 2650 RPM)
	54676	Rotor (650, 1000, 1400 RPM)
6.	43888	Ass'y—Rotor Vane (Set of 5)
7.	44869	Cylinder
8.	13227	Plate—Rear End

Fig. No.	Part No.	Description
9.	10241	Bearing—Ball
10.	21534	Ring—Retainer
11.	14794	Gasket
	43781	Ass'y—Complete Motor (650, 1000, 1400 RPM)
	43782	Ass'y—Complete Motor (2150 RPM)
	43783	Ass'y—Complete Motor (360, 2650 RPM)



REVERSING MOTOR ASSEMBLY

Fig. No.	Part No.	Description
1.	35227	Washer
2.	10221	Bearing—Ball
3.	13226	Plate—Front End (Includes Fig. 2)
4.	44870	Rotor (1800 RPM)
	54675	Rotor (300, 2250 RPM)
	54676	Rotor (550, 850, 1200 RPM)
5.	43888	Ass'y—Rotor Vane (Set of 5)
6.	54049	Cylinder

Fig. No.	Part No.	Description
7.	13246	Plate—Rear End
8.	10241	Bearing—Ball
9.	21534	Ring—Retainer
	53907	Ass'y—Complete Motor (550, 850, 1200 RPM)
	53057	Ass'y—Complete Motor (1800 RPM)
	53908	Ass'y—Complete Motor (300, 2250 RPM)