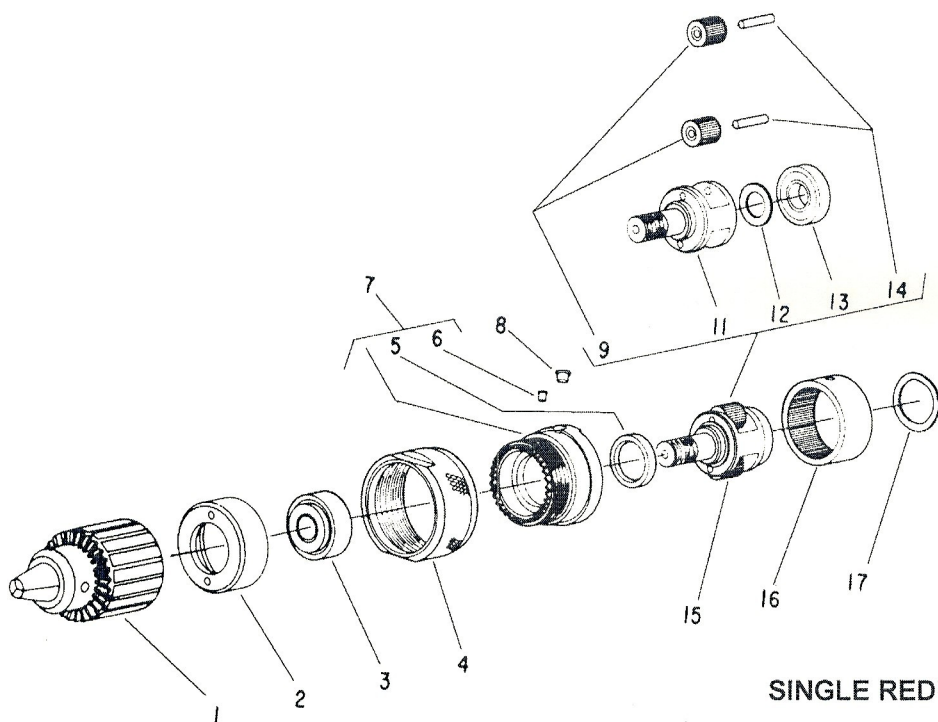


PARTS LIST FOR NO. 3 SERIES PISTOL AND "T" HANDLE DRILLS



SINGLE REDUCTION GEAR CASE

Fig. No.	Part No.	Description
1.	21002	Chuck (3/8" Cap.)
	21137	Chuck (1/2" Cap.)
	08310	Screw—L.H. (Serial "C" & Up)(Reversing Units)
	30011	Key—Chuck (Used with either chuck.)
2.	44914	Retainer
3.	10198	Bearing—Ball
4.	44798	Sleeve—Lock
5.	30258	Seal—Oil
6.	30375	Fitting—Grease
7.	44799	Case—Gear
8.	44795	Pin
9.	19327	Ass'y—Gear & Bearing (1800 & 2150 RPM)(2)*
	19324	Ass'y—Gear & Bearing (2250 & 2650 RPM)(2)*
11.	22656	Spindle—Chuck (1800 RPM)(Reversing) (Includes 08310 Screw)
	44808	Spindle—Chuck (2150 RPM)(Non-Reversing)
	22657	Spindle—Chuck (2250 RPM)(Reversing) (Includes 08310 Screw)

Fig. No.	Part No.	Description
	22640	Spindle—Chuck (2650 RPM)(Non-Reversing) (Includes 08310 Screw)
12.	25976	Washer
13.	10203	Bearing—Ball
14.	30467	Pin (2)*
15.	53724	Ass'y—2nd Planetary Gear (1800 RPM)(Reversing)(Includes 08310 Screw)
	43873	Ass'y—2nd Planetary Gear (2150 RPM)(Non-Reversing)
	53723	Ass'y—2nd Planetary Gear (2250 RPM)(Reversing)(Includes 08310 Screw)
	43872	Ass'y—2nd Planetary Gear (2650 RPM)(Non-Reversing)
16.	19208	Gear—Ring
17.	41236	Washer
	53731	Ass'y—Gear Case (1800 RPM)(Reversing)
	43875	Ass'y—Gear Case (2150 RPM)(Non-Reversing)
	53730	Ass'y—Gear Case (2250 RPM)(Reversing)
	43876	Ass'y—Gear Case (2650 RPM)(Non-Reversing)

*Order Quantity As Needed