

PARTS LIST FOR SDR10P SERIES DRILLS REVERSING SINGLE REDUCTION SERIAL "A"

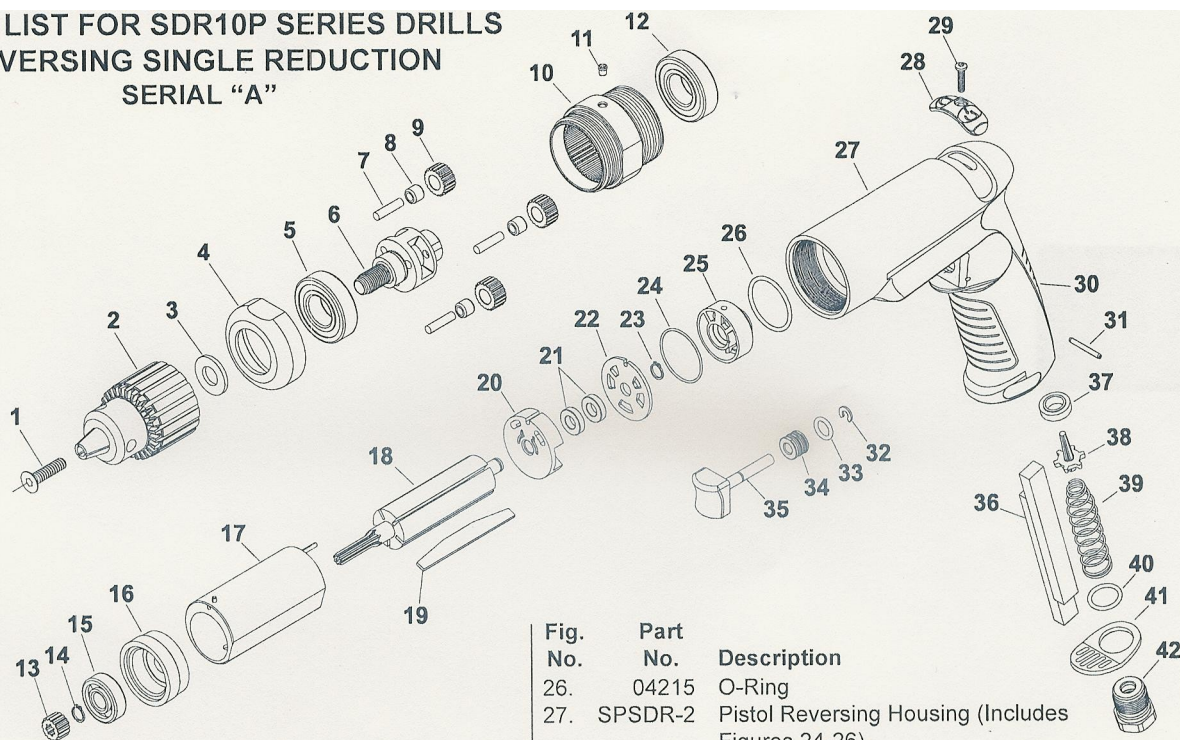


Fig. No.	Part No.	Description
1.	57250R	Chuck Screw
2.	21019A	1/4" Chuck (for model numbers ending with 2)
	21133B	3/8" Chuck (for model numbers ending with 3)
	21137	1/2" Chuck (for model numbers ending with 4)
3.	ME5A72	Washer (for model numbers ending with 2 or 3)
	35798	Washer (for model numbers ending with 4)
4.	SDR-43	Gear Case Cap
5.	10265	Ball Bearing
6.	SDR-61	Gear Carrier (2000 RPM)(3/8" thread)
	SDR-62	Gear Carrier (2500 RPM)(3/8" thread)
	SDR-63	Gear Carrier (4000 RPM)(3/8" thread)
	SDR-64	Gear Carrier (2000 RPM)(1/2" thread)
7.	SDR-24	Pin (3)*(2000 & 2500 RPM)
	30062	Pin (3)*(4000 RPM)
8.	10028B	Needle Bearing (3)*(2000 & 2500 RPM)
	10040	Needle Bearing (3)*(4000 RPM)
9.	SDR-44	Planetary Gear (3)* (2000 RPM)
	SDR-45	Planetary Gear (3)* (2500 RPM)
	SDR-46	Planetary Gear (3)* (4000 RPM)
10.	SDR-40	Single Reduction Gear Case (Includes Fig. 11)
11.	30375	Grease Fitting
12.	ME11A33A	Ball Bearing
13.	SDR-47	Sun Gear (4000 RPM only)
14.	21491	Retaining Ring (4000 RPM only)
15.	10220	Ball Bearing
16.	SDR-80	Front End Plate
17.	SP74130	Cylinder, Reversing
18.	SDR-7	Rotor (7 tooth)(2000 & 4000 RPM)
	SDR-8	Rotor (10 tooth)(2500 RPM)
19.	SP74048	Vane Set
20.	SDR-11	Rear End Plate
21.	SDR-26	Ball Bearing (2)*
22.	SDR-10	Reversing Plate
23.	21491	Retaining Ring
24.	69017	O-Ring
25.	SPSDR-9	Reversing Manifold (Includes Figures 24,26)

Fig. No.	Part No.	Description
26.	04215	O-Ring
27.	SPSDR-2	Pistol Reversing Housing (Includes Figures 24-26)
28.	SDR-16	Reversing Shuttle
29.	SDR-12	Reversing Mechanism Screw
30.	SPSDR-28	Grip (Includes Grip Tape)
31.	30610	Roll Pin 5/64 x 3/4 in
32.	21542	Retaining Ring
33.	14311	O-Ring
34.	SDR-23	Trigger Sleeve
35.	SDR-200	Trigger
36.	04046	Silencer Pad (2)*
37.	IM3100-22	Tipper Valve Seat
38.	SDR-20	Tipper
39.	SDR-13	Trigger Spring
40.	14309	O-Ring
41.	SDR-35	Exhaust Cap
42.	66244R	Inlet Adapter

Not Shown:

SPSDR-7AR	7 Tooth Rotor Motor Assembly (2000 & 4000 RPM) (Includes Figures 15-23)
SPSDR-8AR	10 Tooth Rotor Motor Assembly (2500 RPM) (Includes Figures 15-23)
SPSDR-2A	Reversing Housing Assembly (Includes Figures 24-42)
SPSDR-61A	Gear Carrier Assembly (2000 RPM)(3/8" thread) (Includes Figures 5-9)
SPSDR-62A	Gear Carrier Assembly (2500 RPM)(3/8" thread) (Includes Figures 5-9)
SPSDR-63A	Gear Carrier Assembly (4000 RPM)(3/8" thread) (Includes Figures 5-9)
SPSDR-64A	Gear Carrier Assembly (2000 RPM)(1/2" thread) (Includes Figures 5-9)
30202	Chuck Key 1/4"
30002	Chuck Key 3/8"
30011B	Chuck Key 1/2"

*Order Quantity As Required
FURNISH CATALOG, SERIAL, AND MODEL NUMBER
WHEN ORDERING PARTS